



# THE PLANTATION INSIDER

April 19, 2024

ISSUE 1360



# TABLE OF CONTENTS

## DEPARTMENTS

---

Community Information	<u>3-10</u>
Calendar	<u>11-12</u>
Food & Beverage	<u>13-16</u>
Golf	<u>17-18</u>
Racquets	<u>19-20</u>
Croquet	<u>21</u>
Fitness	<u>22</u>
Family Activities/Social	<u>23-24</u>
Staff Directory	<u>25</u>

## DEPARTMENT PHONE NUMBERS

Plantation House	904-543-2974
Golf	904-543-2960
Racquets	904-543-2977
Administration	904-543-7533

# ASSOCIATION MEETINGS

[Click here for the Association Meetings Calendar](#)

Board of Directors, Tuesday, April 23rd, 9:00 am, PR

- Review (2) Decorum
- Review ADB Appeal Letter
- Approve Legacy Membership Applications
- Approve Temporary Membership Application
- Approve Post Occupancy Agreement
- Approve Member Request
- Approve Board Goals
- Review Annual Calendar Black-out dates

## Key to Plantation Locations

- PH - Plantation House
- BH - Beach House
- LR - Lake Room
- PR - President's Room
- TC - Tennis Center
- PC - Plantation Commons
- GH - Gate House
- CR - Card Room
- TL - Tabby Lane
- FC - Fitness Center

## Dining Phone Numbers

Reservations/Receptionist:

904-543-2974

Catering & Events: 904-543-2989

To Go Orders: 904-689-5001

The Tern: 904-437-8547

## SELECT COVENANT ENFORCEMENT STATISTICS

To provide a more in-depth view of the Select Covenant Enforcement Statistics, here is a detailed breakdown of the Covenant Enforcement Violation numbers for your convenience located on the Security page on the Plantation website.

Please click on the following link that will take you to these statistics.

[Click here](#)



## A MESSAGE FROM THE GENERAL MANAGER

Roger Amidon, General Manager / COO

[ramidon@theplantationpv.com](mailto:ramidon@theplantationpv.com)

Dear Members,

Our progress at the Beach House is in full gear. Our plan to open the Surfside building, pool, pool deck and stairs to the beach is still on track for May 24th at 4:00 pm. Our parking lot has been compromised due to the ongoing construction which means we will not have any parking available for our Members. I will be setting up a temporary shuttle system to accommodate our Members who choose to use this service. If you wish to drive, you may park in Mickler's Beach parking lot and walk from the parking lot up to the pool deck. If you decide to use the pool or stairs to the beach you will notice the construction zone is filled with heavy duty equipment and various materials. We will do our best to keep the pool and pool deck free of any debris. As a reminder, our Memorial Holiday weekend activities will be taking place at the Club House. There will be no activities at the Beach House during the construction period. Surfside hours of operation will be 11:00 am-7:00 pm. We will be serving a very casual cuisine along with limited beverage service (no full bar) for any of our Members who venture out to the Beach House during this construction phase. We are in the process of working with Duval Asphalt on a schedule to repave a portion of our parking lot as we make significant progress with the West retaining wall. Updates on parking and when it will become available will be communicated to our Members. If you are planning to do any surfing or stand up paddle boarding, please plan to bring these items in and take them with you when you leave, as there will be no storage of these items until the entire project is completed. The shuttle bus will not be able to accommodate surf boards or stand up paddle boards.

During the Memorial Day Holiday weekend, the use of the Beach House will be for Members ONLY. Due to the restricted access please refrain from inviting any guests during the construction project so we may have our team focus on the Member experience.

If you may have any questions about our short-term offerings at the Beach House, please bring them to my attention. Several of our staff members have been fielding many comments from our Members that they are not prepared to respond to.

The Pickle Ball update includes our meeting with a 3rd party expert to review our current situation of standing water on courts 4 and 5. We are going to propose to Mor Sports, the original selected contractor, once again to correct their mistake of improperly pouring and pitching the surface on courts 4 and 5. Mor Sports would need to tear up an area from approximately mid-court back to the fence closest to the road and repour the surface with the proper pitch to allow water to flow to the installed drain. We are anticipating that they will not agree to this. If we cannot reach an agreement, then we may need to go the legal route. In the short term, we will identify another contractor who may be willing to correct this deficiency. This resolution could take several more weeks before we have courts 4 and 5 ready for play. As many of you are aware, we do have power to the pavilion. We are working on the water tie in for the restrooms and the certification for the lift station so that we may open the two restrooms. The court lighting has a few items to be corrected and we anticipate lights, restrooms and related plumbing should be in working order towards the late part of May.

Thank you for those who have contacted me regarding the status of the steam room. Our initial steam generator was not the proper one. We have ordered a new steam generator, and it is in transit as you read this. We should expect delivery any day now and upon receiving it I will assign our team to install it. The anticipated completion of this steam generator installation is expected the week of May 6th.

I have heard from many of our Members that the stairs on the East and West side of the Fitness/Wellness Center need to be addressed. The plan is to have our paver company come out and add additional landing surface as you ascend or descend these stairs. We will have handrails installed on each side of the steps to assist with future navigation of these stairs.

Your feedback is important to me so feel free to contact me directly.

Sincerely,

Roger Amidon

Dear Plantation Members,

As stewards of our community, we are immensely proud of the vibrant culture that thrives here at The Plantation. Our commitment to fostering a warm, inclusive, and supportive environment is at the heart of everything we do.

We believe that the strength of our community lies in our collective adherence to the various policies and procedures that have been established for the well-being and harmony of all 577 homeowners and their families. These guidelines serve as the foundation upon which we build and sustain a safe, respectful, and enjoyable living environment for everyone.

From maintaining our common areas to upholding standards of conduct, each policy and procedure plays a vital role in preserving the unique fabric of our community. By understanding and adhering to these guidelines, we demonstrate our shared dedication to nurturing the culture of respect, cooperation, and goodwill that defines us.

As we move forward, let us continue to embrace and uphold these principles with pride and diligence. Together, we can ensure that The Plantation remains a place where every resident feels valued, supported, and respected.

Starting next week, The Plantation Insider will begin to post one to two policies that will serve as a reminder to our Members.

If you may have any questions or need clarification on any of these policies please reach out to Roger Amidon, (904) 776-0827.

Thank you for your ongoing commitment to our community.

Warm regards,

*Keith Campbell*

Keith Campbell

Board President

*Roger Amidon*

Roger Amidon

General Manager/COO

# Beach House Construction Tours

WEEKLY TOURS

UPCOMING: SUNDAY, APRIL 21ST  
1:00 PM

For your safety, please wear proper footwear for a construction site.

Please RSVP with the Receptionist at 904-543-2974

## COMMUNITY CLARIFICATIONS: WITH THE BOARD PRESIDENT

EVERY TUESDAY

With Keith Campbell, Board President and Roger Amidon, GM/COO

Open office hours in the Presidents Room to address any community concerns.

UPCOMING:

TUESDAY, APRIL 23RD, 5:30 PM - 7:00 PM, PRESIDENTS ROOM

DATE  
CHANGE

UPCOMING:

TUESDAY, APRIL 30TH

5:00 - 6:00 PM

PLANTATION HOUSE

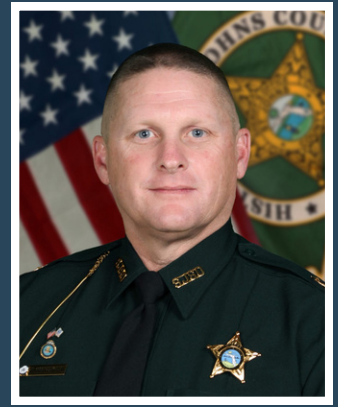
Join Roger for a monthly updates with  
light refreshments.

PLEASE CALL 904-543-2974 TO  
MAKE A RESERVATION.

# Roger That



## MEET SHERIFF ROBERT A. HARDWICK



Location Change:  
Lake Room

Several of our Plantation Members and management staff met with Sheriff Hardwick last week to discuss several items that pertain to The Plantation related to the future safety and security of our community and surrounding areas.

We have invited Sheriff Hardwick to speak with our Members on Monday, April 22nd in the Lake Room. Doors open at 5:30 pm and the presentation will be from 6:00-7:30 pm. This will be an opportunity for Sheriff Hardwick to update our Members with his ongoing initiatives future plans to continue to keep our community top of mind.

Did you know St. Johns County Sheriff's office has 220 license plate readers? These plate readers enable the SJCSO to respond in near real time to any criminal activity or criminals entering St Johns County. Comparatively, Jacksonville Beach only has eleven license plate readers.

Come meet Sheriff Hardwick and his team to listen to his updates, so that you will be in the know. After his presentation there will be time for questions and answers.

Please reserve your space with our Receptionist by calling 904-543-2974.

## PALM VALLEY COMMUNITY ASSOCIATION WELCOMES JOY ANDREWS

The Palm Valley Community Association is hosting County Administrator Joy Andrews on May 6th from 6:30 p.m. - 7:30 p.m. Ms. Andrews will present a State of the County report and take questions from the audience.

The Palm Valley Community Association is located at 148 Canal Blvd., between V Pizza and the Fire and Rescue Station.

Parking is limited; carpooling is encouraged.





# Plantation foundation

The Plantation Foundation Board of Directors and our Scholars  
express our thanks to the following donors for their gifts:

Magna Cum Laude

Jill & George Mikes

Dean's List

Christine & Clarence Watridge

## DAVE'S SHOE SERVICE

Respiking

Cleaning & Polishing

Cosmetic touch ups

& more

Call or text

(904) 207-0046





# ANNUAL PLANTATION FOUNDATION CELEBRATION & SILENT AUCTION



SUNDAY, MAY 5TH  
5:30 - 8:00 PM  
THE PLANTATION HOUSE

Join us for a Cinco de Mayo celebration! Enjoy delicious specialty tacos, Chicken Tortilla soup, salad, desserts, sample tequilas, and a margarita bar.

Plus, don't miss our annual silent auction with incredible gift baskets and travel experiences. Enter the raffle for a chance to win a fantastic "Day at the Beach" gift basket worth \$500!

## SPECIAL THANKS TO OUR SPONSORS:

Since 2013, The Foundation has given \$660,000+ in scholarships to Plantation staff and their families.



**Brian Moorman**  
Senior Global Real Estate Advisor  
716.783.1878



# APRIL 2024

SUN MON TUE WED THU FRI SAT

	1	2	3	4	5	6
	Golf Course Closed F&B Services Closed	Buffet Dinner 5:00 - 9:00 pm (PH) Asian Theme	A la Carte Dinner 5:00 - 9:00 pm (PH) Couples Bridge 5:00 pm (PH)	PLGA Play Day Croquet Closed A la Carte Dinner 5:00 - 9:00 pm (PH)	A la Carte Dinner 5:00 - 9:00 pm (PH)	
		Trivia 5:30 pm (PH)			The Plantation Players Men's Member-Guest Event	
7 Sunday Brunch 9:00 am - 1:00 pm (LR) Burger Night 5:00 - 8:00 pm (PH)	8 Golf Course Closed F&B Services Closed	9 Buffet Dinner 5:00 - 9:00 pm (PH) Italian Theme	10 A la Carte Dinner 5:00 - 9:00 pm (PH)	11 Croquet Closed A la Carte Dinner 5:00 - 9:00 pm (PH) Couples Canasta 5:00 pm (PH)	12 A la Carte Dinner 5:00 - 9:00 pm (PH)	13 A la Carte Dinner 5:00 - 9:00 pm (PH)
		9 & Dine Mixed Golf Event		PLGA Masters Par 3 Event	Masters Week	
14 Sunday Brunch 9:00 am - 1:00 pm (PH) Burger Night 5:00 - 8:00 pm (PH)	15 Golf Course Closed F&B Services Closed	16 Buffet Dinner 5:00 - 9:00 pm (PH) Ladies' Night Themed Menu	17 A la Carte Dinner 5:00 - 9:00 pm (PH) Couples Bridge 5:00 pm (PH)	18 PLGA Play Day Croquet Closed A la Carte Dinner 5:00 - 9:00 pm (PH)	19 A la Carte Dinner 5:00 - 9:00 pm (PH)	20
Masters Week		Ladies Night Fashion Show 6:00 pm (PH)	Cooking with Chef 12:00 pm (PH)		MGA Men's Member Member Golf Event	
21 Sunday Brunch 9:00 am - 1:00 pm (PH) Burger Night 5:00 - 8:00 pm (PH)	22 Golf Course Closed F&B Services Closed	23 Buffet Dinner 5:00 - 9:00 pm (PH) Smokehouse Menu PYP Club 5:00 (PH)	24 A la Carte Dinner 5:00 - 9:00 pm (PH)	25 Croquet Closed Couples Canasta 5:00 pm (PH)	26 A la Carte Dinner 5:00 - 9:00 pm (PH)	27 A la Carte Dinner 5:00 - 9:00 pm (PH)
				Chilean/Argentinian Wine Dinner 6:00 pm (PH)	PLGA Ladies Member Guest Event	
28 Sunday Brunch 9:00 am - 1:00 pm (PH) Burger Night 5:00 - 8:00 pm (PH)	29 Golf Course Closed F&B Services Closed	30 Buffet Dinner 5:00 - 9:00 pm (PH) Floribbean Theme Roger That 5:00-6:00 pm (PH) White Tie Croquet Demo Day 3:00-5:00 pm (PC)				

# MAY 2024

SUN	MON	TUE	WED	THU	FRI	SAT
			1 A la Carte Dinner 5:00 - 9:00 pm (PH)  Couples Bridge 5:00 pm (PH)	2 PLGA Play Day Croquet Closed  A la Carte Dinner 5:00 - 9:00 pm (PH)	3 A la Carte Dinner 5:00 - 9:00 pm (PH)  Tennis Cinco de Mayo Event 6:00 pm	4 A la Carte Dinner 5:00 - 9:00 pm (PH)
5 Sunday Brunch 9:00 am - 1:00 pm (LR)  Plantation Foundation Cinco De Mayo Event 5:30-8:00 pm (PH)	6 Golf Course Closed F&B Services Closed  USGA US Open Men's Qualifier	7 Buffet Dinner 5:00 - 9:00 pm (PH) Theme: Japanese  Trivia 5:30 pm (PH)	8 A la Carte Dinner 5:00 - 9:00 pm (PH)	9 Croquet Closed A la Carte Dinner 5:00 - 9:00 pm (PH)  PLGA 3 Jills & a Jack Event	10 A la Carte Dinner 5:00 - 9:00 pm (PH)	11 A la Carte Dinner 5:00 - 9:00 pm (PH)
12  Mother's Day Brunch 10:00-1:00 pm (PH)	13 Golf Course Closed F&B Services Closed	14 Buffet Dinner 5:00 - 9:00 pm (PH) Theme: Low Country  9 & Dine Mixer 4:30 pm Shotgun	15 A la Carte Dinner 5:00 - 9:00 pm (PH)  Couples Bridge 5:00 pm (PH)  Cooking with Chef 12:00 pm (PH)	16 PLGA Play Day Croquet Closed A la Carte Dinner 5:00 - 9:00 pm (PH)	17 A la Carte Dinner 5:00 - 9:00 pm (PH)	18 A la Carte Dinner 5:00 - 9:00 pm (PH)  MGA Team Two Man 6-6-6 Event
19 Sunday Brunch 9:00 am - 1:00 pm (PH)  Burger Night 5:00 - 8:00 pm (PH)	20 Golf Course Closed F&B Services Closed  Paper Shredding Event 4:00-7:00 pm Tabby Lane Recycling Center	21 Buffet Dinner 5:00 - 9:00 pm (PH) Theme: Seafood  Ladies Night Kentucky Derby Theme 6:00 pm (PH)	22 A la Carte Dinner 5:00 - 9:00 pm (PH)  Wine Dinner 6:00 pm (PH)	23 Croquet Closed A la Carte Dinner 5:00 - 9:00 pm (PH)  PLGA Closing Day	24 A la Carte Dinner 5:00 - 9:00 pm (PH)  Beach House Reopening 4:00 pm  Last Day of School Activities (Bus Stop/PC) 12:30-3:30 pm	25 A la Carte Dinner 5:00 - 9:00 pm (PH)
26 Sunday Brunch 9:00 am - 1:00 pm (PH)  Burger Night 5:00 - 8:00 pm (PH)	27  Golf Course Open  Memorial Day Celebrations (PH)	28 Golf Course Closed F&B Services Closed	29 Buffet Dinner 5:00 - 9:00 pm (PH) Theme: Mediterranean  PYP Club 5:00 (PH)	30 Croquet Closed A la Carte Dinner 5:00 - 9:00 pm (PH)  Roger That 5:00-6:00 pm (PH)	31 A la Carte Dinner 5:00 - 9:00 pm (PH)	

# PLANTATION HOUSE

ALL FOOD & BEVERAGE OPERATIONS ARE CLOSED ON MONDAYS

## BEVERAGE CART

Friday - Sunday, 10:00 am - 4:00 pm

## PUB '87

Bar Hours:

Tuesday-Thursday, 11:00 am - 9:00 pm

Friday-Saturday, 11:00 am - 11:00 pm

Sunday, 10:00 am - 8:00 pm

Dining Hours:

Tuesday - Saturday

Lunch: 11:00 am - 3:00 pm

Dinner: 3:00 - 9:00 pm

Sunday

All Day Menu: 12:00 pm - 8:00 pm

## THE TASTING ROOM

Bar Hours:

Tuesday-Thursday, 5:00 - 9:00 pm

Friday-Saturday, 5:00 - 11:00 pm

Sunday, 5:00 - 8:00 pm

## THE LAKE ROOM

Dining Hours:

Tuesday-Saturday

Lunch: 11:00 am - 3:00 pm

Dinner: 5:00 - 9:00 pm

Sunday

Brunch: 9:00 am - 1:00 pm

# BEACH HOUSE

Closed for renovation

## RESERVATIONS POLICY

- No Standing Reservations for a la Carte Dining.
- Reservations for weekly events, such as Burger Night, can only be made two weeks in advance.
- Reservations for large club events, such as Easter and Mother's Day, can be made as soon as the promotion has been published.
- Tables will only be held for 15 minutes past reservation time.
- Tables are a maximum of 10 people.
- Reservations cannot be increased in number without prior approval.

# Chef's Corner

## WALLEYE FISH FRY

WITH MALT VINEGAR TARTAR SAUCE

### Ingredients

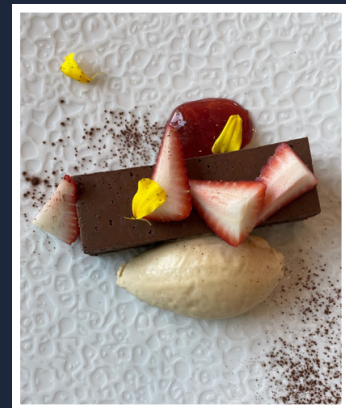
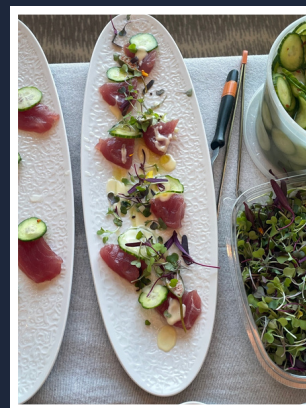
- 1 ea Walleye 12oz portion
- 1 cup tempura flour
- ½ cup rice flour or potato starch
- 1 each choice of your favorite ale (something like Coors light)
- Salt & Pepper to taste
- 2 lemons
- 3 cups frying oil or canola oil
- 1 cup mayonnaise
- 2 tablespoons chopped capers
- 2 tablespoons chopped parsley
- 1 bottle malt vinegar



### Method

Heat frying oil to 350 degrees. Take tempura flour mix with ale and incorporate until mixed with no lumps. The batter needs to be somewhat thick. For tartar sauce, take mayonnaise, capers, parsley, and malt vinegar (as needed). Mix and add more malt vinegar if needed. Season fish with salt and pepper, dip in rice flour then into the batter. Then place in pre-heated oil fry for 3 minutes per side unless fully submerged (if fully submerged, 5 minutes total). Remove from oil and drain fish onto a plate with some napkins to absorb any unwanted grease. Serve with tartar, lemon wedges and choice of fries. Enjoy!

## CREATIONS FROM COOKING WITH CHEF ON APRIL 17TH



# CHILEAN / ARGENTINIAN WINE DINNER

JOIN US AS WE HEAD SOUTH  
AND ENJOY SOME WORLD  
RENOWNED / HIGH-END WINES  
BY THE LIKES OF DON  
MELCHOR

PLANTATION HOUSE  
THURSDAY, APRIL 25TH  
6:00 PM COCKTAILS  
6:30 PM DINNER BEGINS

\$110 ++ / \$100++ Vineyard Club  
(904) 543-2974 to Reserve

[vineyardclub@theplantationpv.com](mailto:vineyardclub@theplantationpv.com)

## Menu

1st

Argentinian Shrimp Ceviche, Coconut, lime caviar,  
root chips

2nd

Trucha a la Parrilla (grilled trout), quinoa herbed  
salad, citrus vinaigrette

3rd

Grilled Picanha , garlic butter, eggplant puree,  
charred tomatoes, chimichurri

4th

Dulce De Leche Crème Brulee, lemon, rosemary,  
blueberry

# Mother's Day BRUNCH

Sunday, May 12th  
at The Plantation House

Seatings from  
10:00 am to 1:00 pm

Adult: \$49+  
Child Ages 3-11: \$20+

RSVP

Receptionist 904-543-2974



Ladies NIGHT





HOT SHOTS OF THE WEEK



Preston Jones - Hole-In-One

April 12th, Hole 3, 7 Iron

Preston had a big crowd to celebrate his Hole-In-One in Pub '87.



George Mikes

April 14th, Hole 16

George now has The Plantation Hole-In-One Grand Slam with a Hole-In-One on all four Par 3 holes.



[Click here](#) for more information.

Deadline to register:

Sunday, April 21st

PARADYM  
AI SMOKE



SWEETER FROM  
EVERY SPOT



**DOWNLOAD ACCURANGE™  
FOR FREE!**

Get Distances to Every Target  
on the Range on Your Phone



Download on the  
App Store



GET IT ON  
Google Play



Point your Phone Camera at  
Appropriate QR Code and Install

Select "Find AccuRange Nearby"

Select The Plantation at Ponte Vedra Beach

Choose Main or South Tee

Distances Automatically Appear

No Laser, No Sign In, No Password Needed

SIGN UP FOR YOUR CUSTOM FITTING TODAY

WHERE

PLANTATION COUNTRY CLUB INC



WHEN

Fri May 03 2024  
from 11:00 AM to 3:00 PM(EST)



CERTIFIED FITTER

Introducing the 2024 PLGA Member Guest, where excellence meets elegance on the emerald fairways



# MASTERS & MAGNOLIAS

an event unlike any other

Get ready to tee off in style and vie for 'green jacket' glory.

## Schedule of Tournament Events



### APRIL 24TH

Pre-Scheduled Practice Round (request by 4/4)

6PM  
Complimentary Cocktail on the Pub '87 Veranda



### APRIL 25TH

11AM  
Registration & Lunch in the Pelican Room

1PM  
Shotgun Start  
2 of 4 Best Ball (G/N)

5PM  
Hors d'oeuvres Reception on the Lower Patio



### APRIL 26TH

730AM  
Breakfast on the Lower Patio

830AM  
Shotgun Start  
Shamble 2 of 4 Best Ball (G/N)

1PM  
Lunch and Awards on the Pelican Veranda

Invite up to 3 guests, create a foursome with another member, or contact the ProShop for pairing.

Entry Fee Per Player  
\$250 (plus tax)

RSVP  
by March 28th

Register at ProShop  
904-543-2960

Cancellations by April 17th receive 50% refund, no refund thereafter.

When reserving a court, please include the names of all players using the court, including guests.

UPCOMING MATCHES

Monday, April 27th

USTA

Home 6:00 pm

tuesday, April 23rd

Makeup Match C

Home 9:00 am

**MARGARITA MIXER**

---

**MUSIC - FOOD - DRINK**

---

FRIDAY, MAY 3RD AT 6:00 PM

\$12 PER PERSON, INCLUDES APPS AND MARGARITAS  
 TRIPLETS FORMAT  
 STAFF WILL MAKE TEAMS  
 SIGN UP ON FORETEES AVAILABLE  
 FUN, GAMES AND PRIZES!

**FRIENDLY REMINDER**

**Please use the Foretees to sign up for Junior tennis classes!**

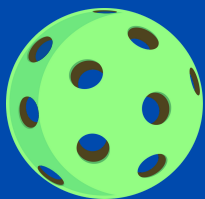
**-Thank you!  
Racquets staff**



Our JTT team won their match last Friday  
against Celestina!



IF YOU'RE FAMILIAR TO PICKLEBALL  
AND HAVE POINT PLAY EXPERIENCE,  
JOIN OUR  
**2.0 AND GO**  
PICKLEBALL CLINIC



TUESDAY, APRIL 23RD 11:00 - 12:30 PM

\$25 PER PERSON

PLEASE SIGN UP ON FORETEES

(8 PEOPLE PER CLASS)

OR EMAIL SHAWN HEINCHON AT

[SHEINCHON@THEPLANTATIONPV.COM](mailto:sheinchon@theplantationpv.com)

WE HAVE LOANER PADDLES TO BORROW.

Pickleball Weekly Open Play

Every Sunday

Open mixed play Doubles

9:00 - 11:00 am

All levels welcomed

No sign ups necessary

Every Wednesday

Open mixed play doubles

6:00 - 8:00 pm

All levels welcomed



**CARDIO TENNIS  
CLINIC**

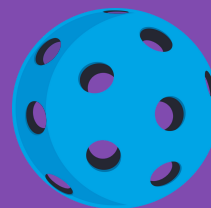
WEDNESDAYS 8:30-10:00 AM

ALL LEVELS ARE WELCOMED!

\$27 PER PLAYER

SIGN UP ON FORETEES

IF YOU'RE NEW TO PICKLEBALL OR  
JUST NEED A REFRESHER, JOIN OUR  
**PICKLEBALL  
BEGINNER CLINIC**



THURSDAY, APRIL 25TH 11:00 - 12:30 PM

\$25 PER PERSON

PLEASE SIGN UP ON FORETEES

(8 PEOPLE PER CLASS)

OR EMAIL SHAWN HEINCHON AT

[SHEINCHON@THEPLANTATIONPV.COM](mailto:sheinchon@theplantationpv.com)

WE HAVE LOANER PADDLES TO BORROW.

**Dills, Drills and Skills**

Sunday, April 21st

11:30 am-1:00 pm

All levels welcomed

Sign up on Foretees

\$25 per person



# WEEKLY CROQUET REPORT APRIL 19TH - 26TH

MONDAY	2:00-4:00 PM 4:00-5:30 PM	MEN ON THE LAWN WICKED WICKETS WOMEN
TUESDAY	9:00-11:00 AM	LADIES ON THE LAWN
WEDNESDAY	9:00-12:00 PM 4:30-5:30 PM	AUSSIE CROQUET DRILLS AND TACTICS CLINICS
THURSDAY	CLOSED	
FRIDAY	9:00-11:00 AM 3:00-5:00 PM	LADIES ON THE LAWN TGIF
SATURDAY	9:00-10:30 AM 10:30-12:00 PM 3:00-5:00 PM	BYOP BYOB MEN ON THE LAWN
SUNDAY	4:00-6:00 PM	WINE AND WICKETS

## Croquet Chatter!

Once upon a time there was a large group of distinguished Plantation Owners that had an idea. What would happen if we created a Croquet Court? For most of us that was a fun game we played in our backyards with all kinds of obstacles. My personal game had hills, valleys, crooked placed wickets and several stakes that needed to be hit in order to win the game. Remember how you could bomb your opponent's ball somewhere far in the backyard? Our first court in The Plantation was completed in early 2016. It was such a success that the original idea makers negotiated to create yet another full Croquet Court. Today we have two gorgeous courts, a Commons area for events and parties, an open field for more activities. It is a beautiful place enjoyed by over 200 Current Croquet Association Members!

I would like to introduce myself to you. My name is Kathryn Fitzgibbons, and I am the newly elected PCA Chairperson. It was two years ago that I moved to The Plantation. For two months, I unpacked boxes until one day, I had enough. I said, "I need to go do something." I went to Skills and Drills at 9:00 am on a Wednesday at the Croquet Court. I loved it! I hold one of the world records for the most attended Skills Classes in one year - 47 total!! I was welcomed with open arms, made many new friends and truly LOVE the Game of Croquet. I heard many stories about what used to be - so I decided to run for the Board and was elected. Myself, along with my PCA Committee members: Christine Anderson, David Taylor, and Judy Conway are working tirelessly to bring back lots of great events and functions to the Croquet Commons. Get ready for Croquet and Rosé, National Croquet Day, Breakfast at Croquet, Guys and Dolls (a great gents and ladies tournament with lots of drinks and appetizers), July 4th (with Flag obstacles), and much more. We are just getting started, so please stay tuned for dates and details.

We would love your ideas and always look forward to you joining us on the Lawn.

I can be reached at 808-937-1530 or [kathrynsofkona@gmail.com](mailto:kathrynsofkona@gmail.com).

A day is not over until you have played Croquet!

Kathryn Fitzgibbons  
PCA Chairperson

# FITNESS NEWS

Fitness Center is open on Mondays!

Hours are 5:00 am-11:00 pm daily!

Please do not forget to sign in.

We are attempting to get an accurate usage report of the facility.

## Fitness Classes...

No need to register or sign up in advance. Just show up and sign in on the form located in the Class Studio!

### Never taken a group fitness class?

Now is the perfect time to try! With our small class sizes, instructors can easily help modify and instruct you with more personal attention compared to most facilities. The convenience and personalized instruction make Group Fitness Classes at The Plantation a great place to come together as a community and keep our bodies healthy and moving!

### Please make note...

- Senior & Strong Class on the 25th is rescheduled for Wednesday the 24th at 10am.
- Total Body on the 25th is rescheduled for 11am on Wednesday the 24th.
- Yoga & Tunes and Toning is cancelled for the 25th.

*We apologize for the change and cancellation, Ronda's son is graduating College.*

Check out the schedule here.

Contact Caitlin with any questions, suggestions or concerns.

[cdentchev@theplantationpv.com](mailto:cdentchev@theplantationpv.com)

434-806-2342

## The Massage Room is ready for use!

60 minute Swedish Massage \$100

90 minute Swedish Massage \$140

60 minute Deep Tissue/Sports Massage \$130

90 minute Deep Tissue/Sports Massage \$180

*All sessions will be charged to your member account*

**Andrea Danti 904-234-3964**

Availability: Thursdays

Also available for acupuncture sessions

<https://www.acupuncturejacksonville.net/about>

**Casey Brown 407-953-4001**

Availability:

Wednesday 3-7

Saturday 10-7

Sunday 10-2

**Donna Raulerson 904-655-5525**

Availability: Monday, Tuesday, Wed 1-4

Thursday 9-1

Friday 9-5

**Grace Skinner 904-451-5640**

Availability: Monday, Tuesday, Friday 12-6

**Toni (female) 904-502-8919**

Availability: Tuesday 9-12 Flexibility with

hours on Monday, Thursday & Friday

PLEASE REACH OUT TO THE THERAPIST DIRECTLY TO SCHEDULE YOUR MASSAGE & CAITLIN WITH ANY OTHER QUESTIONS.

*Celebrate!*

the Last Day of School

**KONA ICE** Truck

Thursday, May 24th

at The Plantation's Bus Stop

12:30 - 3:30 pm

Help out the Plantation Foundation by throwing water balloons at Josh and Roger!

Water balloons will be available for purchase.

Plantation Garden Club  
Cummer Museum Garden Tour

TUESDAY, MAY 21ST  
11:00 AM

Join us for a docent led tour of the beautiful, historic gardens set against the backdrop of the St. Johns River and optional lunch at the museum following the tour.

Cost: \$25 entry paid at the museum  
+ \$20 if you choose to stay for lunch

# WELCOME TO THE 2024 PLANTATION SUMMER CAMP

Looking for a fun and exciting summer adventure for your child? Look no further! Our summer camp offers a dynamic program filled with activities, games, crafts, movies, and more, all tailored to each week's exciting theme.

CAMP HOURS: 9:00 AM - 3:00 PM

AGES: 5-12

LOCATION: PLANTATION HOUSE\*

\*When beach house is reopened, updated location will be communicated

## Weekly Dates and Themes:

- May 28th - May 31st: Around The World
- June 3rd - June 7th: Under the Sea
- June 10th - June 14th: Mad Science
- June 17th - June 21st: Color Explosion
- June 24th - June 28th: Magic/Harry Potter
- July 1st - July 3rd: Stars & Stripes (3 days only, reduced cost)
- July 8th - July 12th: Fun in the Sun
- July 15th - July 19th: Blast Off Into Space
- July 22nd - July 26th: World of Sports, Olympics
- July 29th - August 2nd: Lego Universe

[Click here to register](#)  
[Click here for the  
Parent Guide](#)

## Weekly Rates:

\$325\* for Members

\$350\* for accompanied guest

\*Partial weeks will be prorated

Daily Drop Off Rate: \$70

CAMP



# STAFF DIRECTORY

## MAIN LINE | 543-2999

Dial 904-543-2999 to reach one of the following:  
Security, The Plantation House/Reservations, Beach House, Special Events/Catering, Golf, Racquets, Marketing/Membership/Real Estate or Administration/General Services

## ADMINISTRATION | 101 Plantation Drive

Roger Amidon, General Manager / COO

Office: 543-7528 | Cell: 776-0827

ramidon@theplantationpv.com

Erin Lyons, Executive Administrative Assistant

543-7533 | elyons@theplantationpv.com

Barbara Williams, Dir of Marketing & Membership

543-7534 | bwilliams@theplantationpv.com

Melissa Angulo, CFO

543-7529 | mangulo@theplantationpv.com

Anne Clarke, Accounting Manager

543-7530 | aclarke@theplantationpv.com

Debby Unger, Accounting Assistant

543-7537 | dunger@theplantationpv.com

Aleatha Oaks, Director of Human Resources

543-7531 | aoaks@theplantationpv.com

## GENERAL SERVICES & ADB

109 Tabby Lane & 101 Plantation Drive

Mike Romeo, Director General Services

543-2996 | mromeo@theplantationpv.com

Kelly Traver, General Services Admin Assistant

543-7536 | ktraver@theplantationpv.com

Adrian Baxter, Mail Room

543-7294 | abaxter@theplantationpv.com

Gina Williams, Garden Home Maintenance

543-7290 | gwilliams@theplantationpv.com

Ken Oshman, Maintenance

543-7291 | koshman@theplantationpv.com

## SECURITY

101 Plantation Drive & 150 Plantation Place

Pete Yeschenko, Security Supervisor

543-7535 | pyeschenko@theplantationpv.com

210 Back Gate | 543-2976

PLANTATION HOUSE | 220 Plantation Circle | 543-2974

BEACH HOUSE | 1111 Ponte Vedra Boulevard | 373-5211

Pub '87 & Take Out | 689-5001 The Tern | 543-8547

Magda Kosowska, Dining Reservations/Receptionist

543-2974 | receptionist@theplantationpv.com

Josh Thomas, Clubhouse Manager

543-2979 | jthomas@theplantationpv.com

John Winpisinger, Food & Beverage Manager

543-2978 | jwinpisinger@theplantationpv.com

Craig Porter, Director of Culinary Operations

cporter@theplantationpv.com

Zach Drawdy, Executive Chef

543-2981 | zdrawdy@theplantationpv.com

Jennifer Angus, Director of Catering

543-2989 | jangus@theplantationpv.com

Kimberly Smalls, Dining Services Manager

ksmalls@theplantationpv.com

Dave Rausch, Locker Rooms/Shoe Service

207-0046 | drausch@theplantationpv.com

## GOLF & GROUNDS

210 Plantation Circle & 101 Tabby Lane

Dean Grunewald, Director of Golf

543-2964 | dgrunewald@theplantationpv.com

Ryan Mikesell, Head Golf Professional

543-2960 | rmikesell@theplantationpv.com

Noel Lemon, Outside Operations Director

543-2962 | nlemon@theplantationpv.com

Shannon Wheeler, Director of Agronomy

543-7295 | swheeler@theplantationpv.com

TENNIS & PICKLEBALL 131 Surrey Lane

Shawn Heinchon, Director of Racquets

543-2977 | sheinchon@theplantationpv.com

## CROQUET

Waleed (Willy) Abdelrauf, Croquet Manager

718-909-0200 | wabdelrauf@theplantationpv.com

## FITNESS

Caitlin Dentchev, Fitness Manager

434-806-2342 | cdentchev@theplantationpv.com

## FAMILY ACTIVITIES

Mikala Redman, Family Activities Manager

mredman@theplantationpv.com